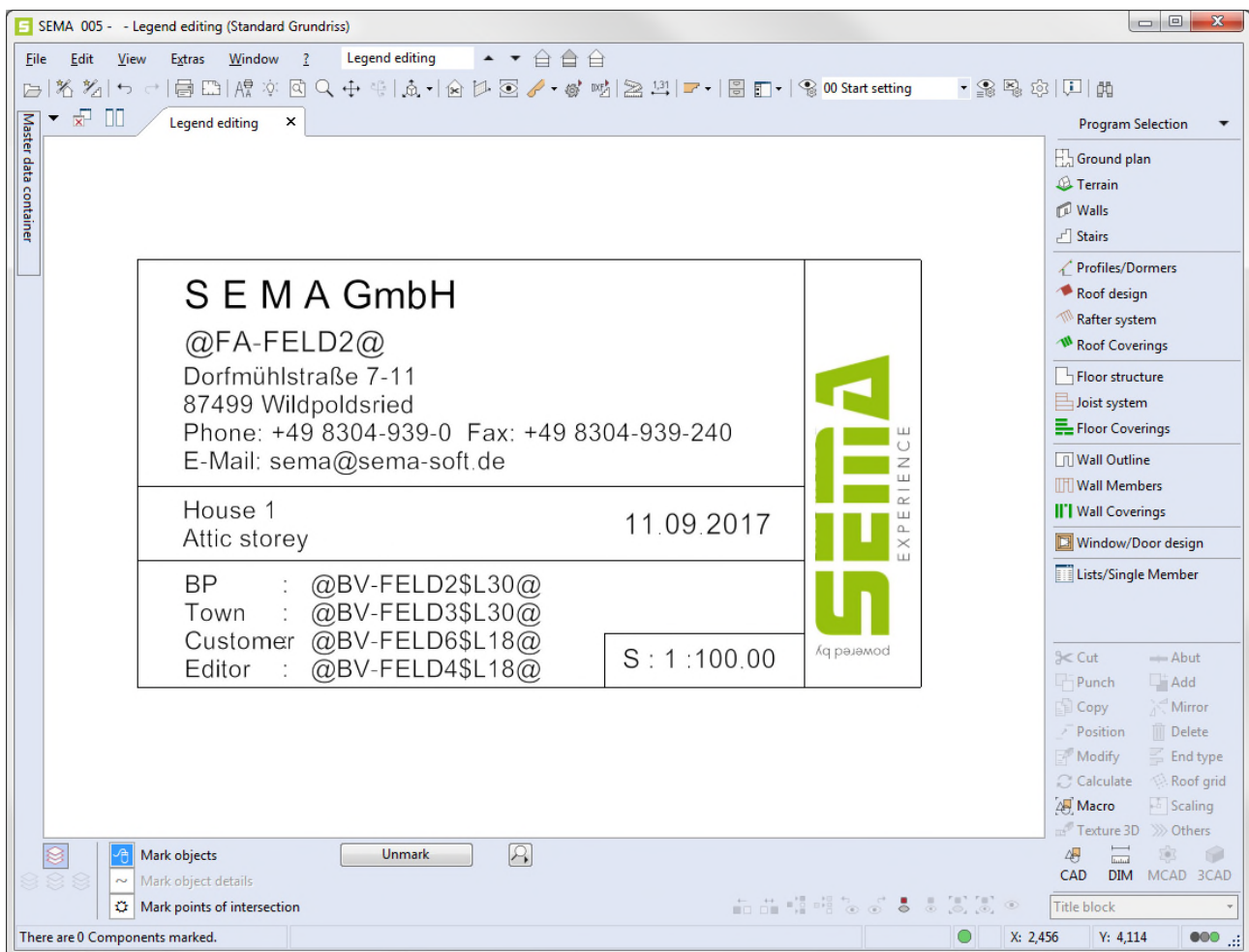


## Legend editing



### Copyright

Any reproduction of the course documents, brochures and SEMA programs in part or in full will be prosecuted. All rights to the software, the brochures and the course documents are with the SEMA GmbH.

Any violations of our copyright will be prosecuted under criminal and civil law.

© SEMA GmbH. All rights reserved.

### Warranty Limitation

No warranty is given for the correctness of the contents of the description of the software and the documents. Since, despite all efforts, errors may occur, we are always happy to receive any details about inaccuracies.

We reserve the right to make changes at any time without specified reasons. Since our programs are revised and enhanced for our user's benefit, we are always happy to receive your ideas and suggestions for improvement. Thus, you can help us to further develop and enhance this tool.

Publisher:

SEMA GmbH  
Computer Software und Hardware-Vertrieb  
Dorfmühlstr. 7-11  
87499 Wildpoldsried near Kempten, Germany  
Germany

Microsoft, MS-DOS, Windows and Internet Explorer are registered trademarks of the Microsoft Corporation.

The Internet Explorer was provided by the Microsoft Corporation with kind permission.

Any reproduction or disassembly is prohibited.

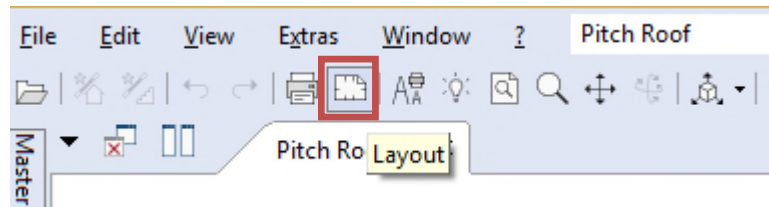
All rights to this software product are with the Microsoft Corporation.

Printed in Germany  
Art. Nr. INSTR-LEGEND-EN 01/2018

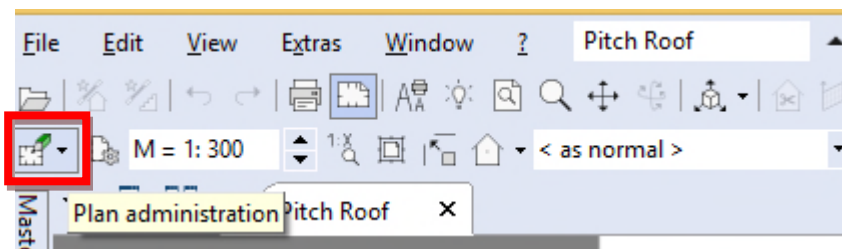
## 1. Edit of legend macros

To edit a legend in the SEMA program on the company-specific properties, proceed as follows:

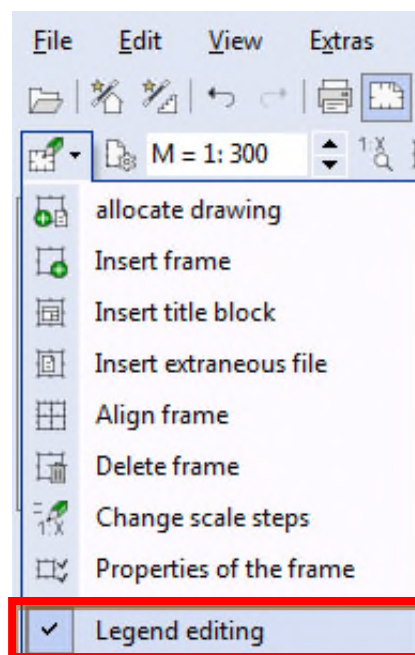
Switch to Layout view. There are various standard plans of SEMA stored. Depending on the level in which you are located a Layoutplan opens.



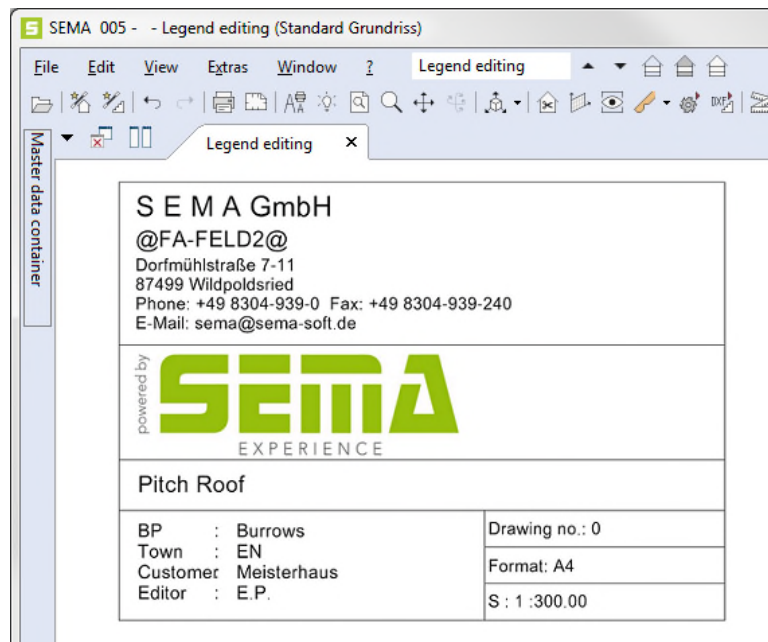
If you are in the Layout view, the Plan administration button is available. In this menu, you can call up the settings for the screen layout.



An additional window opens. There are several plan administration options available. To change the legend position, select "Legend editing".



If you close the layout view with the Button Layout View / Normal View (  ), the legend is shown on the hole drawing area.



The legend is a macro, which can be ungrouped into individual CAD lines, text components, and graphics. To edit the legend, it is necessary to ungroup the legend with the function ungroup. Therefore tag the legend and choose **Macro → ungroup**.

**S E M A GmbH**

**@FA-FELD2@**

**Dorfmühlstraße 7-11**

**87499 Wildpoldsried**

**Phone: +49 8304 939 0 Fax: +49 8304 939 240**

**E Mail: sema@sema-soft.de**

**House 1  
Allie storey**

**17.08.2017**

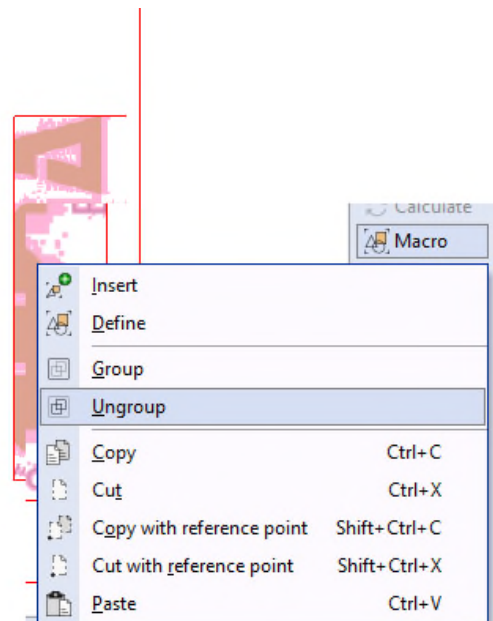
**BP : @BV-FELD2\$30@**

**Town : @BV-FELD3\$30@**

**Customer : @BV-FELD6\$18@**

**Editor : @BV-FELD4\$18@**

**S : 1 : 75.00**



If the legend are ungrouped, all parts off the legend are separately selectable. Depending on which template is used, there may still text modules that need to be ungrouped.

Now all the properties can be changed on the user request. To change the legend use the CAD commands, lines, graphics or texts.

For the texts, placeholders are used, which fall back on the building project properties or company address. The legend does not have to be changed manually because the program automatically uses the stored data for the legend.

Extras → Company Address

SEMA GmbH

Dorfmühlstraße 7-11  
 depp  
 Phone: +49 8304-939-0 Fax: +49 8304-939-240  
 E-Mail: sema@sema-soft.de

House 1  
 Attic storey 18.08.2017

BP : @BV-FELD2\$L30@  
 Town : Wild  
 Customer : @BV-FELD6\$L18@  
 Editor : @BV-FELD4\$L18@ S : 1 : 75.00

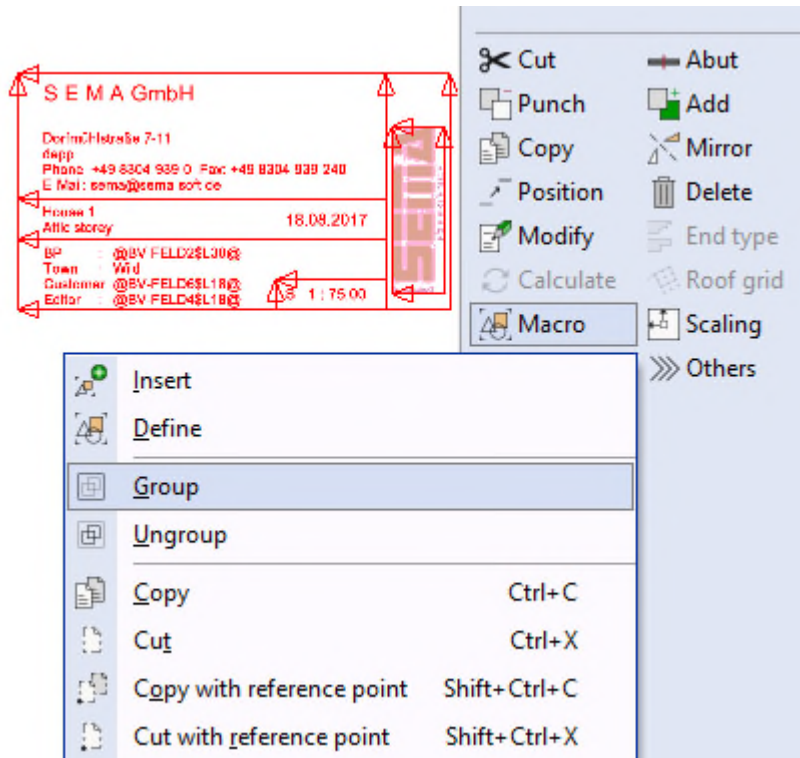


File → Building project properties

If you insert your own graphics, make sure you use a JPEG file. Put this in the legend. The position can be set via the position command.

If you finished your changes on the legend, mark the hole block. Make sure that all parts of the legend are marked.

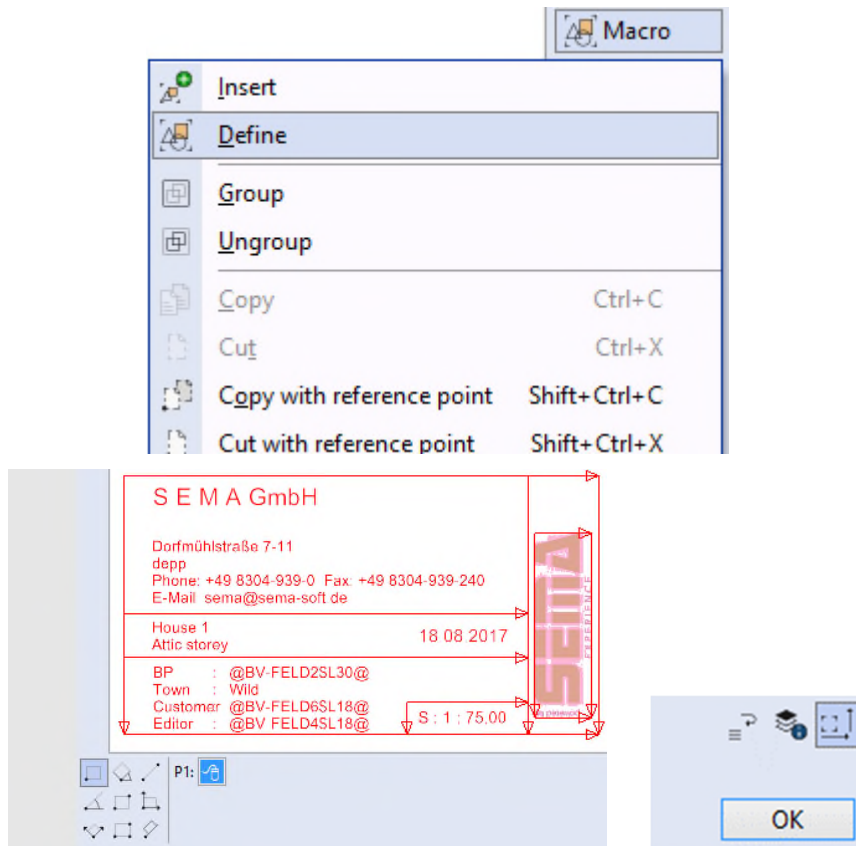
Change the single lines into a macro with the command **Macro** → **Group**.



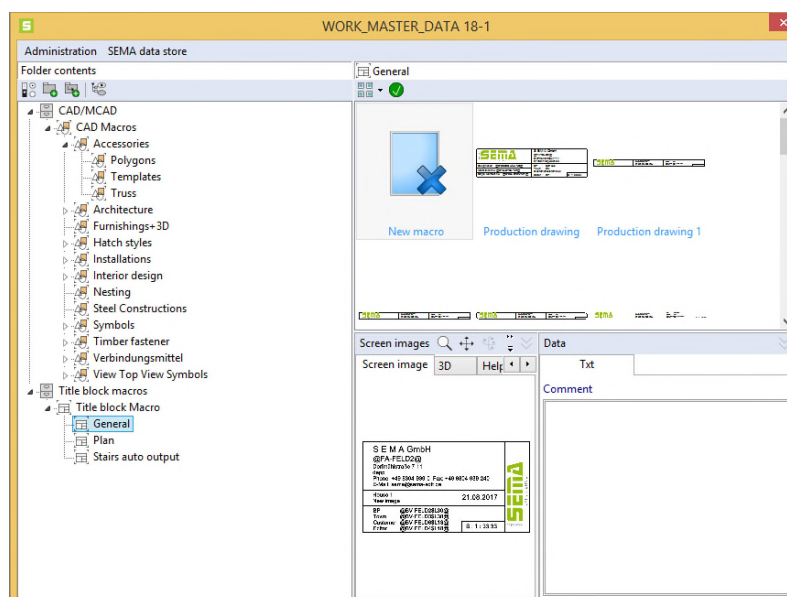


After all CAD elements have been grouped, the changed legend can be saved. To save the legend in the master data proceed as follows.

Mark the hole legend and choose **Macro → Define**.

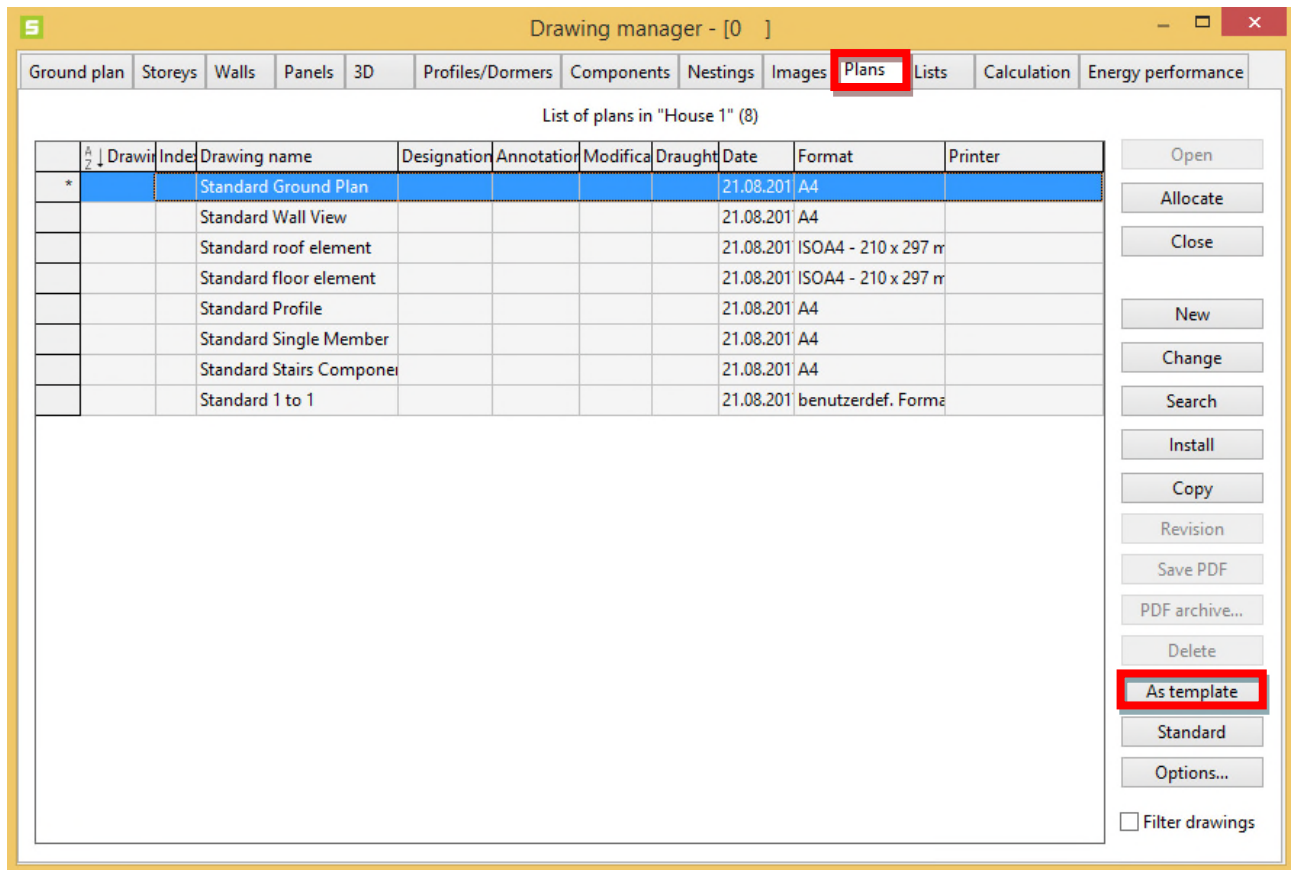


Several instances are available to store the legend. Choose the first additional option and define P1. After the point P1 has been defined, the button OK is activated. Push OK and store the legend.



To use this legend across projects, the current used Layout with the changed legend must be saved as a new standard plan. Proceed as follows,

drawing manager → Plans → as template → push save to overwrite the old plan.



**Important: Don't change the name of "Standard Ground Plan", otherwise the SEMA program can't automatically access to this Plan Layout. If you change the name, the program will use the standard layout of the work master data.**

After all these steps have been done, the new legend is used for each newly created building project. If a new SEMA version is installed, the legend can be accepted with a data transfer. The legend is assigned via the SEMA settings.