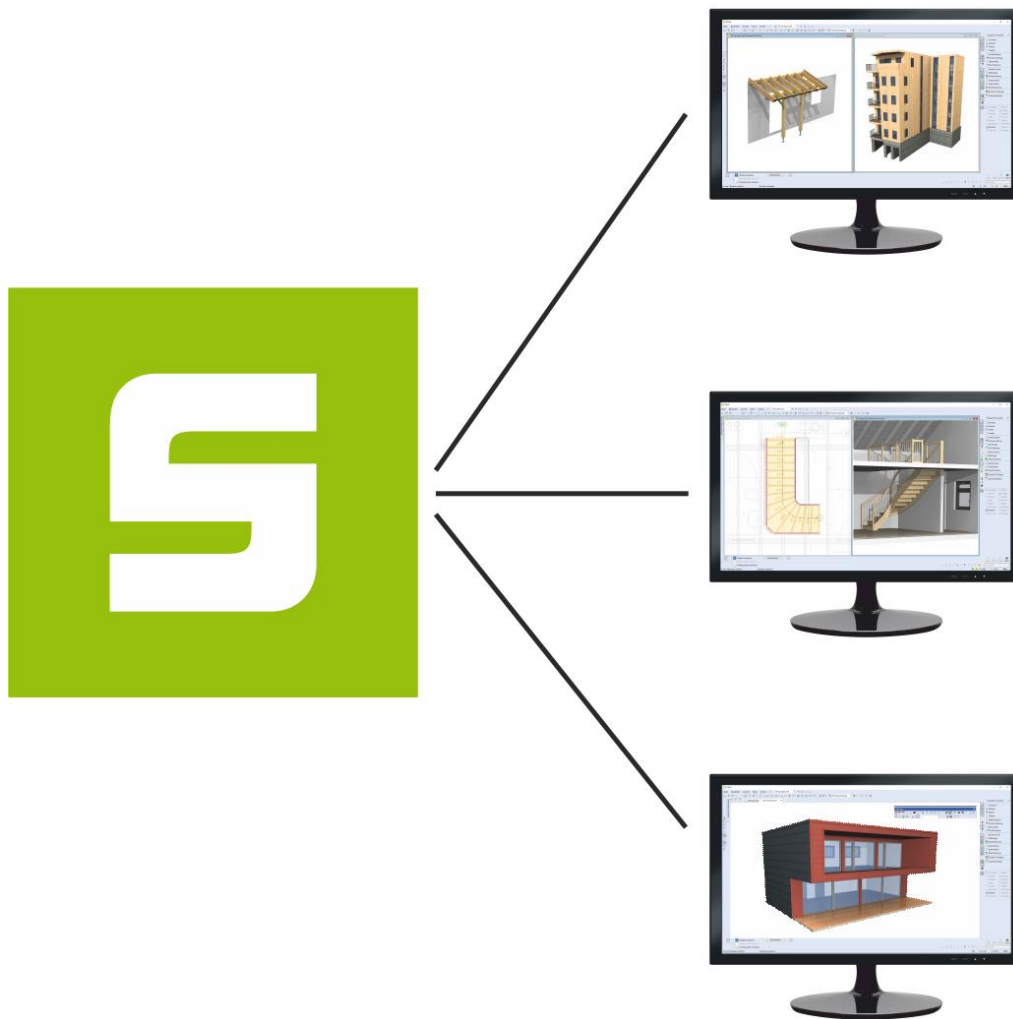

Network Setup

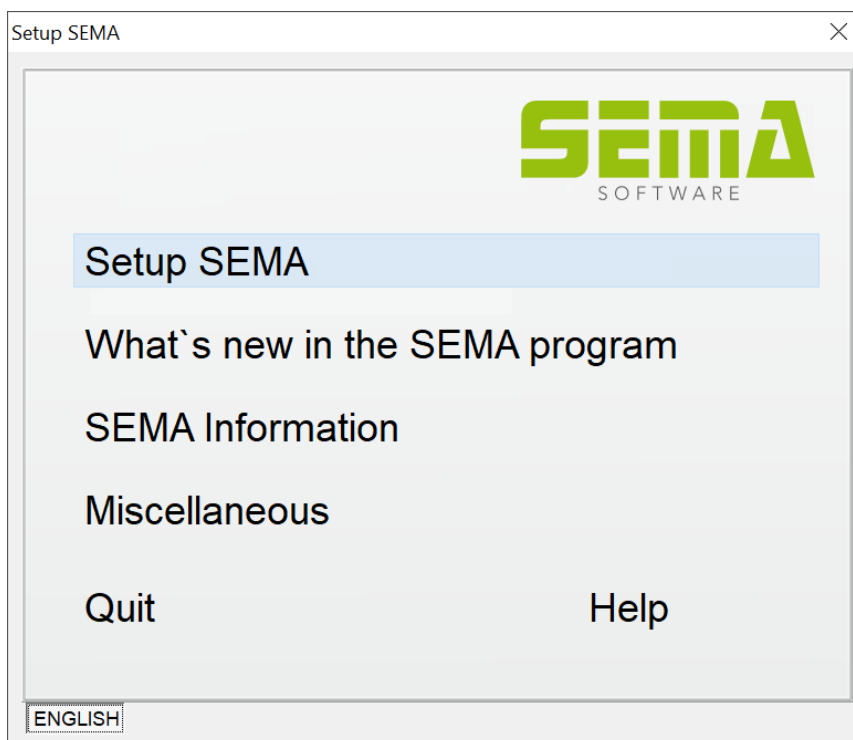


The following steps must be performed if you want to install the SEMA program via the function network setup.

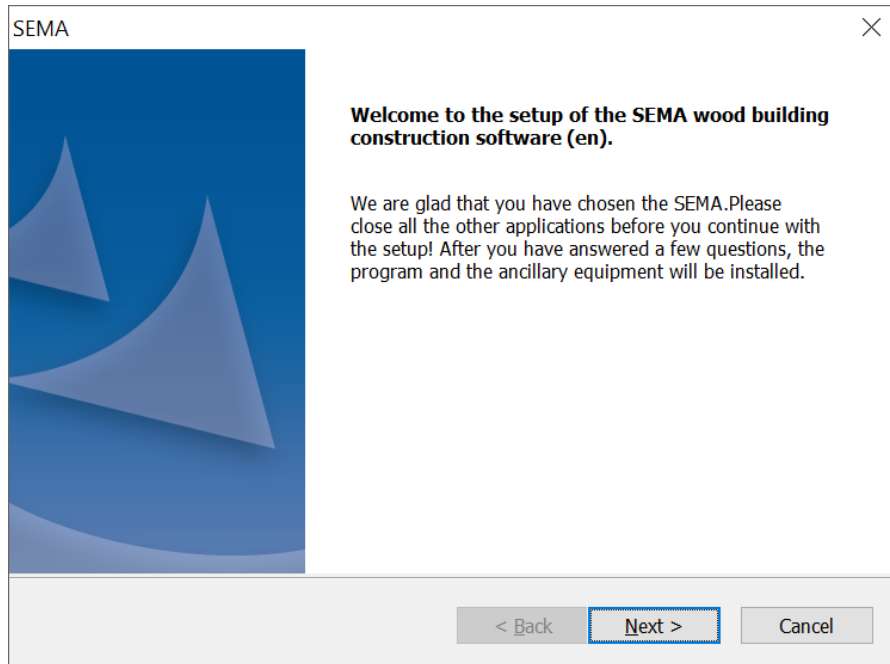
Select and unpack the SEMA setup file.

The setup menu will start and you can then select the function "Install SEMA" - just as in a standard setup.

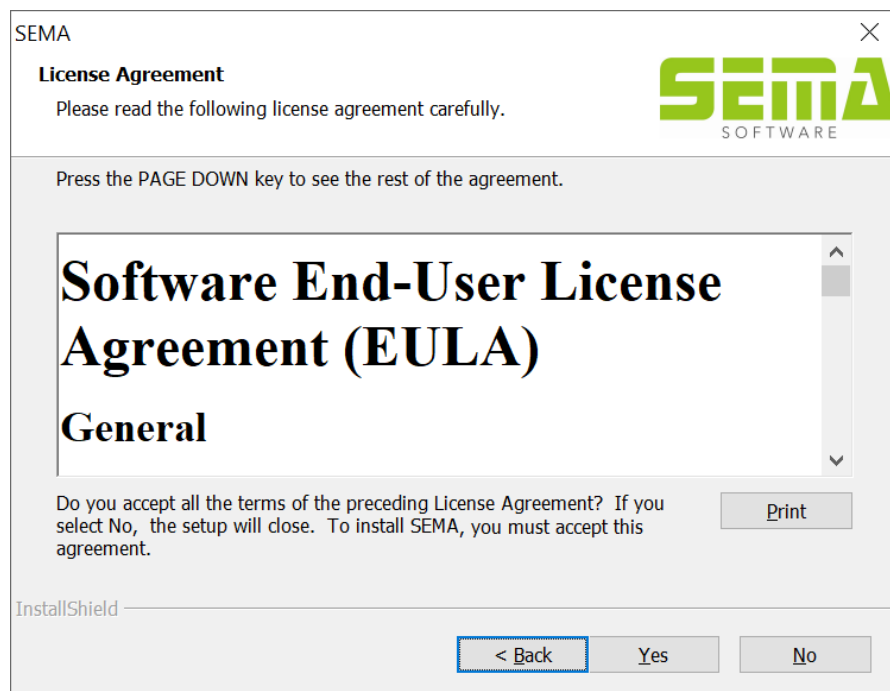
Start screen of the setup menu - please select the command "Setup SEMA" to install the full version. Select "What`s new in the SEMA program" for information about the new features of the current version. Additional information can be obtained via the button "SEMA Information". Under "Miscellaneous" you will find a setup without dongle. You can also install the FRILO program and the dongle driver for the SEMA dongle with this button.



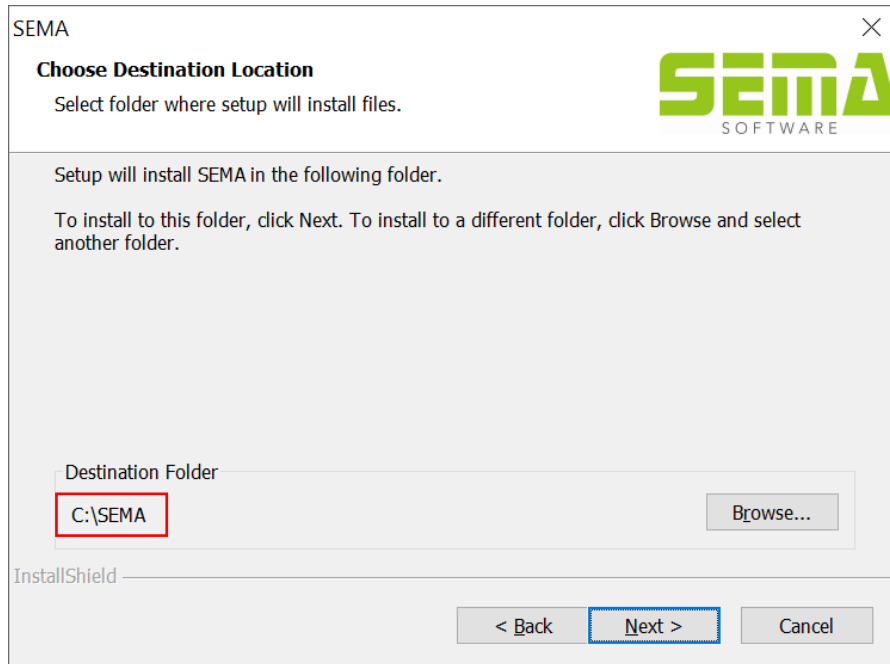
Confirm the welcome screen with "Next":



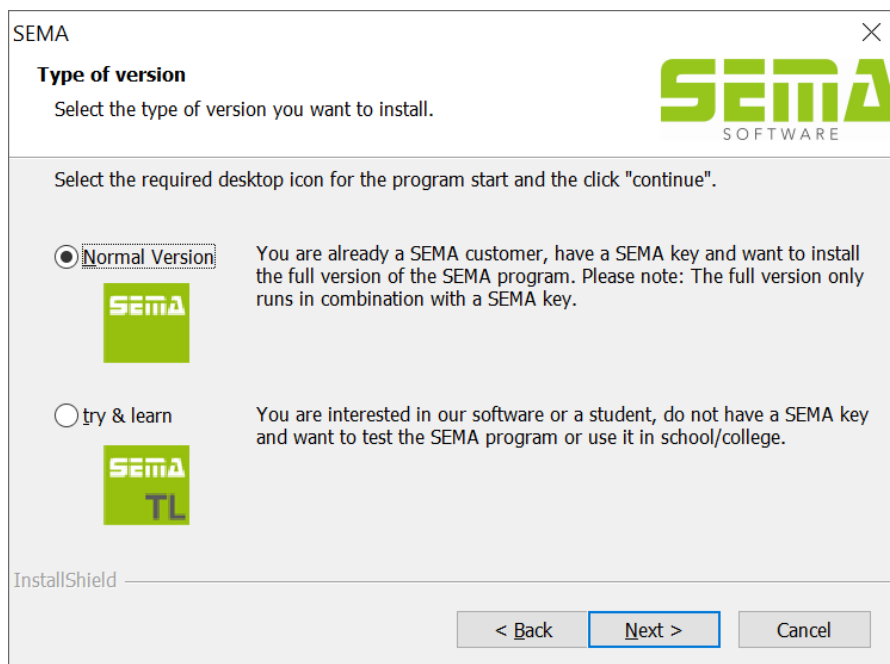
Confirm the License Agreement with "Yes".



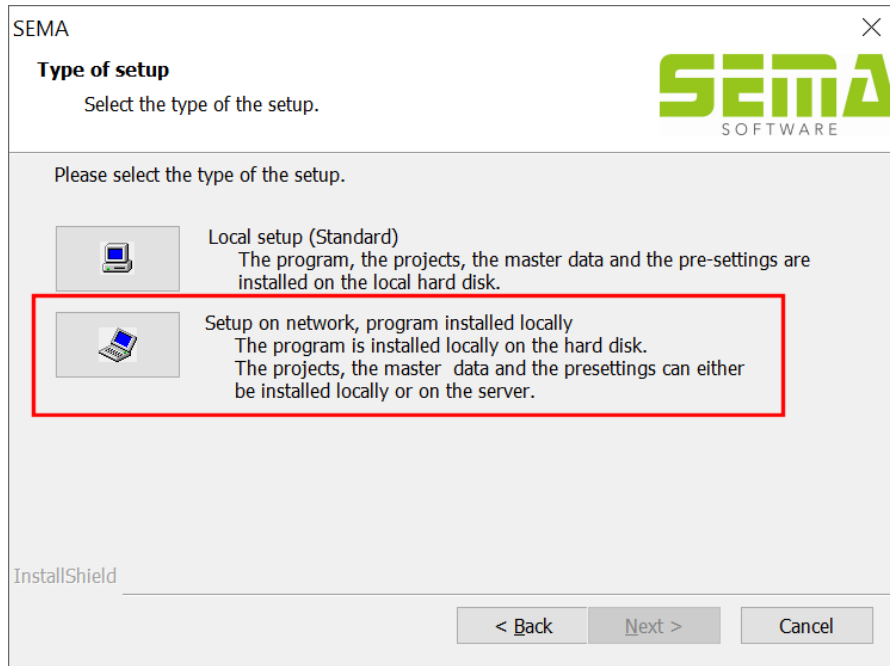
We recommend to set the installation path (destination folder) directly to C: **In principle, it is necessary to ensure that all users supposed to work with the SEMA Timber Construction Software have read, write and delete permission in the folder selected!** Otherwise, working with the software will not be possible.



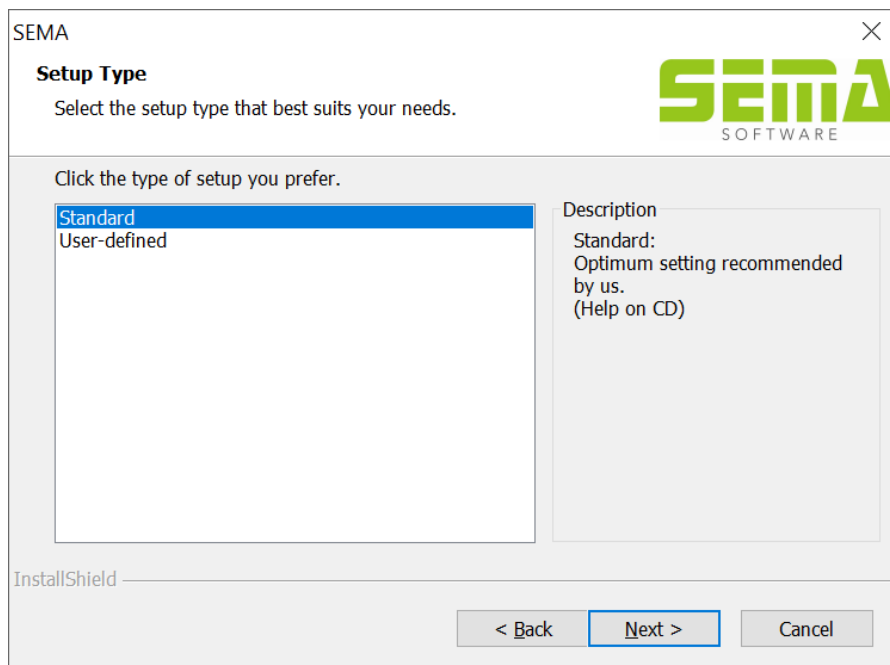
You always need to install the SEMA full version to enable the identification of a dongle - users working without a SEMA dongle can use the "try & learn" version:



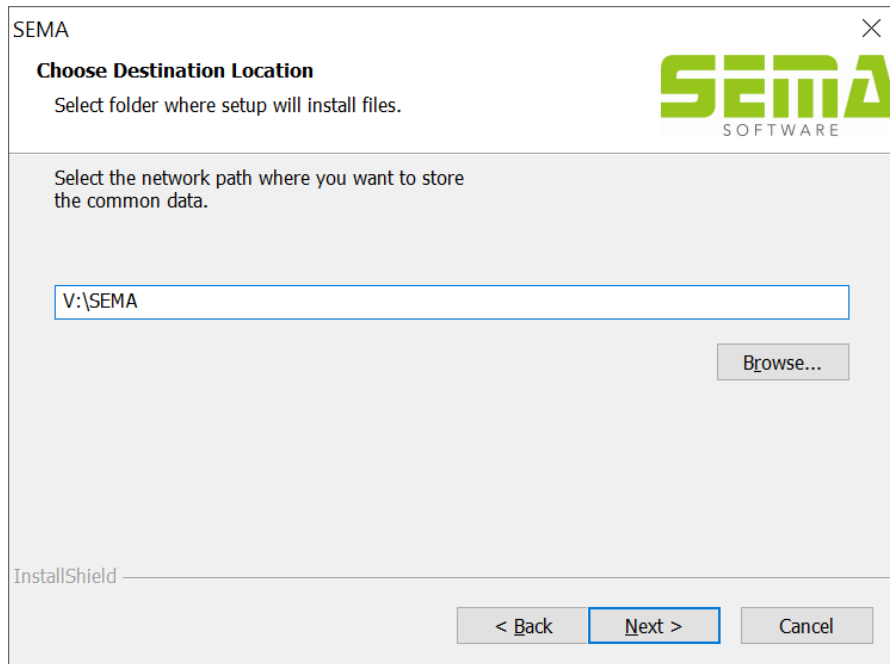
For the setup of shared data on a network, please select "Setup on network, program installed locally":



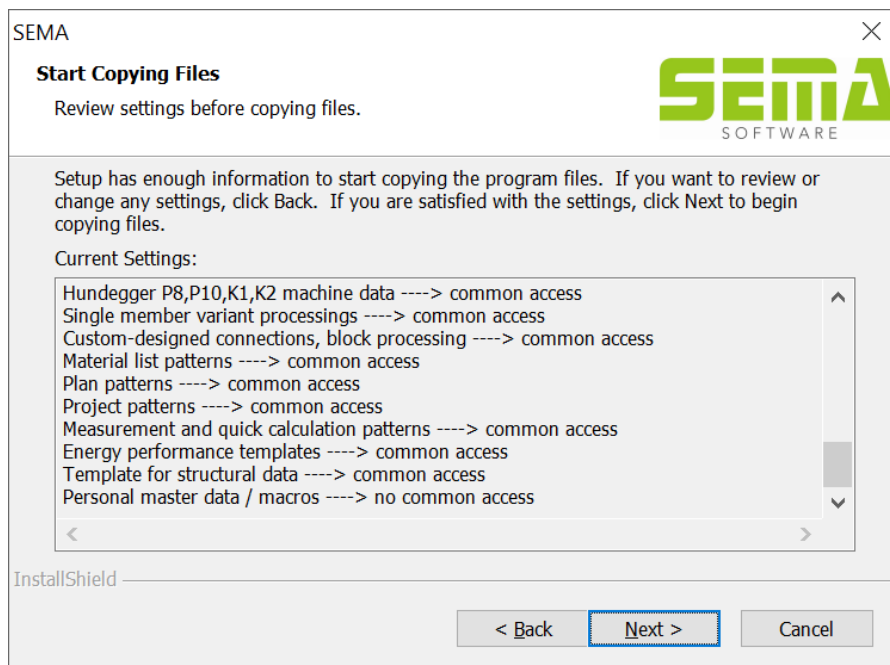
There are different setup types available. Standard setup: The setup type recommended by SEMA - all data that can be shared will be stored on the network path. And the user-defined setup which enables the selection of all shared data so that only specific groups will be stored on the network path.



You may select any installation path you wish. **However, please make sure that all users that are supposed to work with the SEMA Timber Construction Software have read, write and delete permission in the folder selected.** Otherwise, working with the software will not be possible! The following folder has been selected for the sample setup:

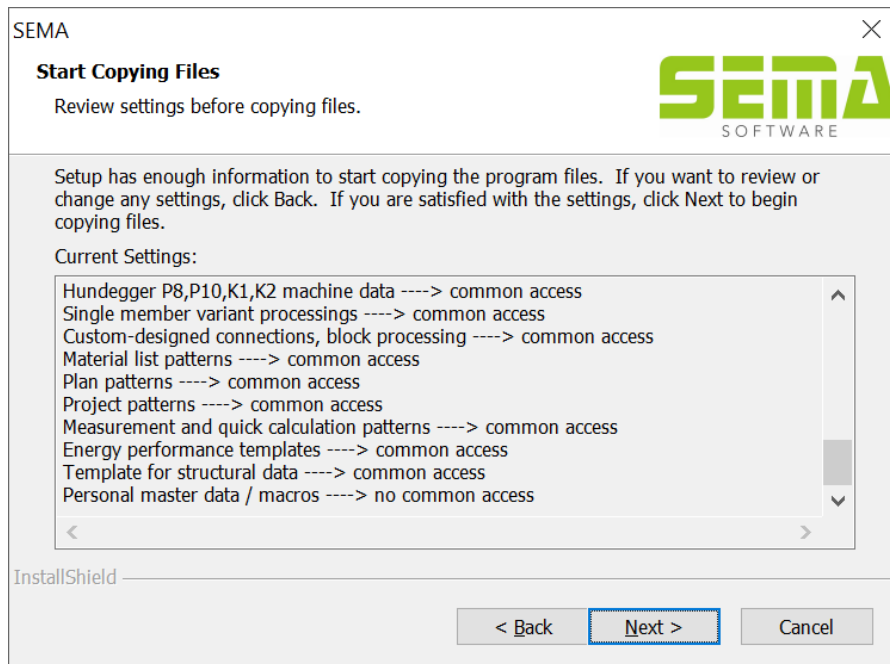


The settings made will be displayed in summarised form after selecting the standard setup - the setup can then be started by clicking the "Next" button.



Three windows will open when selecting the user-defined setup - the desired data can be selected via a check here. These data will then be transferred to the drive for the network path used in common.

The setup settings made will then be displayed in summarised form before the setup can finally be started.



The network setup finished, the program will ask for a system restart.

